

## Fitting instructions for bicycle anchor park

Tools: hammer, drill piece, drill, Allen key, pencil.  
Pictures of hand tools.

Place the frame where you intend to fit the device.



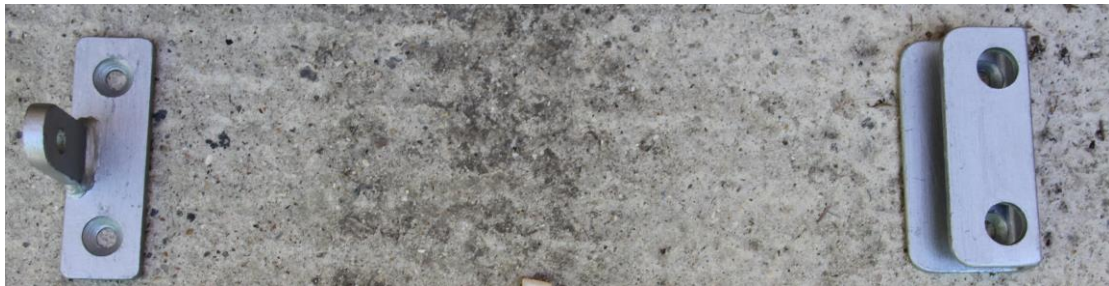
Slide the two brackets under the feet.



Slide out the complete unit leaving the brackets in place.



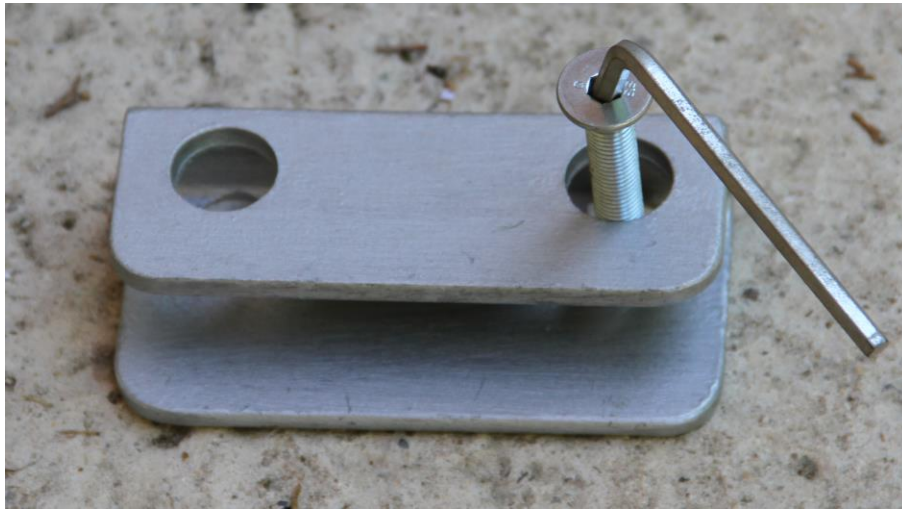
Mark the 4 holes with a pencil on both brackets on the surface.



Remove the brackets and drill out the 4 holes where you have marked it.



Place the security bolts through the bracket to the smaller hole underneath and tighten both bolts with the Allen key.



Now fit the second bracket with the other two security bolts.



Now slide the plate with the legs over the security bolts and brackets.



Put the security plate over the bracket to secure the frame.



Last of all, lock with padlock supplied.

